



Sherwood Court, Highwood Close London, SE22 8NL
£1,500 Per month

TO LET

Gray's
RESIDENTIAL

- Top floor one bedroom apartment within a modern gated development
- Generous double bedroom with ample storage
- Hardwood flooring throughout
- Walking distance to Forest Hill station (Overground & London Bridge links)
- Spacious open-plan kitchen and reception room
- Contemporary bathroom with modern fittings
- Prime East Dulwich location just off Lordship Lane
- Furnished

THE PROPERTY

Set within a modern gated development just moments from Lordship Lane, this beautifully presented top floor one bedroom apartment in East Dulwich (SE22) offers stylish, low-maintenance living in a highly sought-after South London location.

The property comprises a well-proportioned double bedroom, a bright and spacious open-plan kitchen/reception room, and a contemporary fully fitted bathroom. Finished to a high specification throughout, the apartment benefits from hardwood flooring, modern furnishings, and excellent natural light, creating a bright and welcoming living space ideal for professionals.

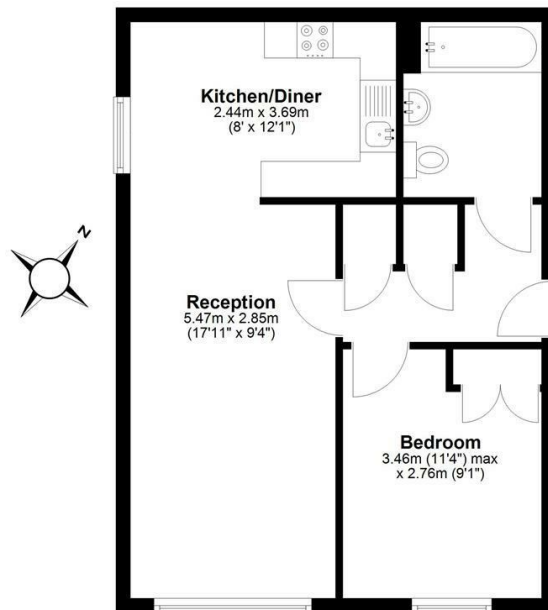
Perfectly located just off Lordship Lane, the property is surrounded by independent cafés, restaurants, and shops, while offering excellent connectivity. Forest Hill station is within easy walking distance, providing direct links to London Bridge, Canada Water (Jubilee Line), and the City via the Overground. The vibrant hubs of East Dulwich, West Dulwich, and Forest Hill town centres are all easily accessible.

This property is ideal for professional tenants seeking a well-connected home in a desirable Dulwich location.

Available to rent from 10th July 2026, Furnished

Third Floor

Approx. 45.7 sq. metres (492.1 sq. feet)



Total area: approx. 45.7 sq. metres (492.1 sq. feet)

Disclaimer: Please note this floor plan is for marketing purposes and is to be used as a guide only. All efforts have been made to ensure its accuracy. Plan produced using PlanUp.